

WARRANTY CARD

1. KH Trading machines and tools are covered by 6/24 months warranty, starting on the date of purchase, as described in the Civil Code (proof of purchase or invoice receipt must be enclosed with the warranty card when making a claim).
2. This warranty does not cover defects caused by unprofessional handling, machine overloads, not complying with instructions contained in this manual, using accessories that are not approved, unauthorized repair, regular wear and tear and damages occurred during transport. Further, this warranty does not cover parts and accessories such as the motor, carbon brushes, seals and hot-air operated parts and parts that need to be changed regularly.
3. If the repair is to be found as not covered by the warranty policy, all costs including the repair and shipping to and from the repair centre will be paid by the customer, according to valid price list. See www.
4. When making a claim, you must present the warranty card, showing the date of the purchase, the serial number of the machine, vendor stamp and signature of sales clerk, as well as the proof of purchase receipt.
5. Warranty claim shall be made at the vendor shop where you bought your machine or you may mail it to a service centre. The vendor is obligated to fill out the warranty card (date of sale, serial number, vendor stamp and signature). All these information must be filled in at the time of sale.
6. The warranty period will be extended for the period of time for which the machine has been in the service centre possession. If the repair or defect is not covered by the warranty policy, all costs including the repair and shipping will be paid by the owner of the machine / tool. We recommend sending the machine in its original packaging. Please, also enclose brief description of the defect with the packaging.
7. Before sending the machine for repair, clean it thoroughly. If the received machine is dirty, it may be rejected by the service shop or you may be charged a cleaning fee.

SERVICE

Logistic centre Klecany

Topolová 483

250 67 Klecany

Czech Republic

Claim department phone number: 266 190 156

266 190 111

Fax:

260 190 100

T-mobile: 603 414 975

O2: 601 218 255

Vodafone: 608 227 255

<http://www.KHnet.cz>

Email: servis@KHnet.cz

Product: 230V - 12 M EXTENSION CABLE/PLUG WITH SELF-WINDING FUNCTION	
Type: GDT120	Serial number (product series):
Date of manufacture:	Repair centre notes:
Date of sale, stamp, signature:	

Without the correctly filled warranty card or without proof of purchase receipt, including the product type (invoice, purchase receipt) no warranty claim will be processed.

uni-max

USER'S MANUAL

230V - 12 M EXTENSION CABLE/PLUG WITH SELF-WINDING FUNCTION



GDT120

- Use personal protective gear such as safety goggles, ear protection, respirator, safe working shoes etc.
- Do not overreach, use both hands.
- Never work under the influence of alcohol or other drugs.
- Do not use the machine/tool if you feel dizzy or weak.
- Any modifications or improvements to the machine are strictly prohibited. DO NOT USE if you discover bent part, crack or other damage to your machine.
- Never perform any maintenance during operation.
- If you see any unusual sign or hear any strange sound, switch of the machine immediately.
- Do not forget to remove all wrenches and/or screwdrivers from the machine.
- Before use, make sure all screws are tightened securely.
- Perform maintenance regularly. Before use make sure the machine is in good working conditions and without any damage.
- Use only original spare parts during repairs.
- Using accessories or extension pieces not approved by the manufacturer may cause injuries.
- Use this machine only for work that could be handled by it. Do not overload tools, accessories or the machine. For large work volume use more powerful machine.
- Do not overload the machine. Measure the work load in such way, so it could be done with comfortable speed. Damages due to machine overload are not covered by the warranty policy.
- Do not expose to extremely high temperature or direct sunlight.
- This machine is not designed for use in humid environments or under water.
- If you are not using your equipment, store it in a dry and locked place, out of reach of children.
- Before switching your machine on, make sure that all safety elements work as designed. Make sure all moving parts are in good working conditions.
- Inspect all parts for cracks and damages. Make sure movable parts are not stuck and set properly. Also take into consideration other conditions that may have a negative effect on the proper function of your machine.
- If not stated otherwise in this manual, all damaged parts and safety elements must be repaired or changed.



Fine mechanics

- Never use a vise to hold you device.
- Protect your machine from fall and impact.



Assembly

- Do not use the machine unless completely assembled.



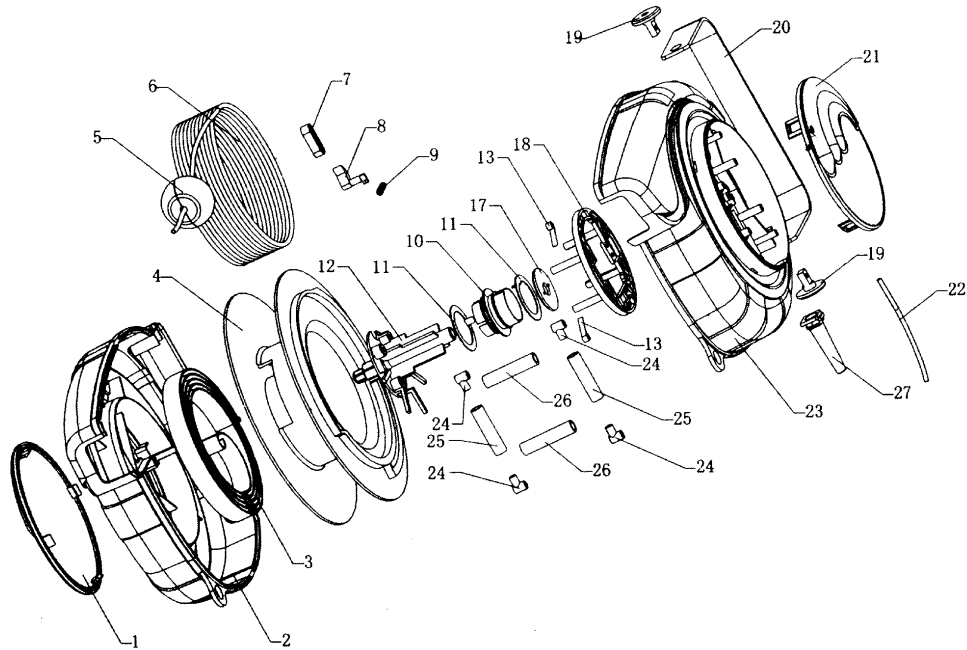
Electrical equipment

- Observe all basic safety rules when using electrical equipment to prevent risk of fire, injuries by electrical shock and other hazards. Before using this device, read this manual entirely and follow all safety instructions.
- Make sure the power cable plug is plugged into the correct wall outlet. The voltage in the wall outlet must be the same as shown on the specification label to prevent damage to the electric motor. Too low voltage will not provide your machine with enough power.

PART LISTING

1. Right decorative cover
2. Right cover
3. Spindle spring
4. Cable core
5. Positioning ball
6. Cable
7. Cable fastening clamp
8. Self-locking jaw
9. Pull spring
10. Dielectric piece
11. Brass ring
12. Middle cable axis
13. Brass plug
17. Middle cable axis cover
18. Supporting seat
19. Foldable seat
20. Console
21. Left decorative cover
22. Cable
23. Left cover
24. House guiding seat
25. Hose guiding support
26. Hose guiding support
27. Bushing

DETAILED PART DRAWING



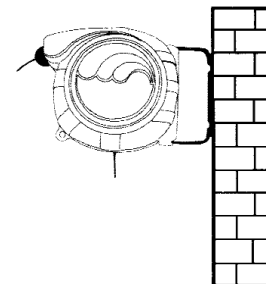
- Before connecting the machine to the wall outlet make sure that the main switch is in the "OFF" position. When you finished your work, disconnect the power plug from the wall outlet and switch off the main switch.
- Never carry electrical tools and appliances by their power cord. When disconnecting the plug from the wall outlet, never pull the cable by its cord.
- Protect the power cable from high temperatures, oils, paint thinners and make sure that the cable is not hanging over sharp edges.
- Inspect the power cable regularly. If damaged have it replaced by qualified technician. Inspect extension cables regularly. If damaged, have it replaced.
- If you need to use an extension cable, use cable with appropriate power rating. Use only completely unwound. Inspect extension cables for damages regularly. Damaged cable must be repaired or changed immediately.
- Before performing any maintenance, repair or adjustment, switch off the main switch and disconnect the power cable from the wall outlet.
- Make sure that machine may not be switched on accidentally. Do not keep your fingers close to the main switch, unless absolutely necessary.
- If you mount your machine to the work table, release the safety button after installation.
- Do not use in environments where explosives are stored or used (paint shops, warehouse with flammables etc.).
- Do not use in humid environments or if wet.

⚠ Power equipment

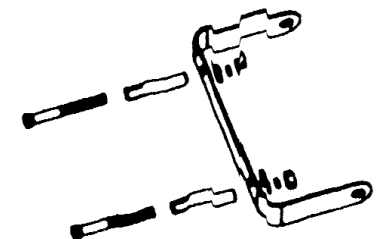
- If your machine is equipped with depressed springs, use suitable device to release them slowly and safely.

ASSEMBLY

- Make sure no part is left inside the packaging box before throwing the packaging materials out. If so, take it out and install it. Use the part listing for check-up and the installation drawing for guidance.
- Console mount. You may mount your extension cable set on a wall, using a revolving console (pic. 3) or to other place (ceiling etc.) In order to turn the cable set around in 180°, make sure that there is a free space of 500 mm on both sides of the cable set. Mount the console on wall or ceiling, using the supplied screws, spring washers and flat washers. The console has a two mounting holes with distance between them of 130 mm. (See picture 4).



pic. 3



pic. 4

OPERATION

Correct operation and control

- If you pulled out sufficient cable length, continue pulling it slowly until you hear "click". The cable is now secured against reeling back.
- If you need longer cable, continue pulling it, until you hear "click" again.
- If you want to wind the cable back, pull it out about 400 mm until you hear "click". Then release the cable and it will reel in automatically.
- Do not help the cable during the reverse reeling action. The cable turns on the spindle may get loose and the cable will not be wound up properly. In such case you must pull the cable out completely and let it reel in again. That way you prevent cable deformation and ensure correct cable storage on the spindle.
- Hold the cable slightly during reverse reeling to prevent injuries due to a cable swing.
- Do not attempt to reel the cable in cold environment as cold cable loses its flexibility. Move the cable set to a warm room. Make sure to bend the cable in large radiuses to prevent cable damage. Reel the cable back in after it reached its usual temperature.

MAINTENANCE

- Before performing any maintenance make sure the cable is disconnected from the wall outlet.
- Protect the cable from water to prevent injuries by electric current.
- Inspect the cable regularly.
- Clean dirty cable or the covers of the cable set with neutral cleaning solution or alcohol. Using aggressive solutions may damage the cable or the covers.
- Store the cable in dry and safe place to ensure its perfect conditions and long operational life.
- Maintain your tools clean. Dirt may enter the inner mechanism of your machine and cause damage.
- Do not use aggressive cleaning solution or paint thinners to clean the machine.
- Clean plastic parts with cloth dipped in soap water.
- If you are not using your equipment, store it in a dry place.

DISPOSAL

When the operational life of your device is over, dispose off it in accordance with valid rules and regulations. Your product is made of metal and plastic parts that may be recycled when separated.

1. Disassemble all parts.
2. Separate all parts according to the material they are made of (e.g. metals, rubber, plastics, etc.). Take the separated parts to the recycling facility near you for further processing.
3. Electrical waste (used electrical power tools, electric motors, recharging equipment, electronics, accumulators, batteries etc.).

Dear customer. In accordance with the valid regional rules and regulations describing the management of electrical waste, electrical waste is considered dangerous. Disposal of electrical waste must be therefore handled as dangerous waste in accordance with waste management rules valid in the state you are in.

It is prohibited to mix electrical waste with regular household waste.

You may return your used electrical appliance to a recycling facility near you. More information about electrical and dangerous waste disposal may be obtained from your local authority or from the Internet.

CAUTION

If the machine breaks down, send it back to the vendor for quick repair.

Please, enclose brief description of the defect. That makes repair easier. If the machine is still covered by warranty, enclose the warranty card and proof of purchase receipt. After the warranty period expires, we repair your machine for a special price.

To prevent possible damages during shipping, packed the machine carefully or use the original packaging material. We are not liable for shipping damages due to incorrect packaging of your machine. If making a claim at the shipping company the level and method of packaging plays a major role during claim evaluation process.

Note: Pictures and contents in this manual may slightly differ from the actual product or accessories. It is due to continuous improvement of our products. Such small differences have no effect on the product functionality.