

WARRANTY CARD

1. KH Trading machines and tools are covered by 6/24 months warranty, starting on the date of purchase, as described in the Civil Code (proof of purchase or invoice receipt must be enclosed with the warranty card when making a claim).
2. This warranty does not cover defects caused by unprofessional handling, machine overloads, not complying with instructions contained in this manual, using accessories that are not approved, unauthorized repair, regular wear and tear and damages occurred during transport. Further, this warranty does not cover parts and accessories such as the motor, carbon brushes, seals and hot-air operated parts and parts that need to be changed regularly.
3. If the repair is to be found as not covered by the warranty policy, all costs including the repair and shipping to and from the repair centre will be paid by the customer, according to valid price list. See www.
4. When making a claim, you must present the warranty card, showing the date of the purchase, the serial number of the machine, vendor stamp and signature of sales clerk, as well as the proof of purchase receipt.
5. Warranty claim shall be made at the vendor shop where you bought your machine or you may mail it to a service centre. The vendor is obligated to fill out the warranty card (date of sale, serial number, vendor stamp and signature). All these information must be filled in at the time of sale.
6. The warranty period will be extended for the period of time for which the machine has been in the service centre possession. If the repair or defect is not covered by the warranty policy, all costs including the repair and shipping will be paid by the owner of the machine / tool. We recommend sending the machine in its original packaging. Please, also enclose brief description of the defect with the packaging.
7. Before sending the machine for repair, clean it thoroughly. If the received machine is dirty, it may be rejected by the service shop or you may be charged a cleaning fee.

SERVICE

Logistic centre Klecany

Topolová 483

250 67 Klecany

Czech Republic

Claim department phone number: 266 190 156

266 190 111

Fax:

260 190 100

T-mobile: 603 414 975

O2: 601 218 255

Vodafone: 608 227 255

<http://www.KHnet.cz>

Email: servis@KHnet.cz

Product: FLYWHEEL PULLER PRO	
Type: HS3319P	Serial number (product series):
Date of manufacture:	Repair centre notes:
Date of sale, stamp, signature:	

Without the correctly filled warranty card or without proof of purchase receipt, including the product type (invoice, purchase receipt) no warranty claim will be processed.

uni-max

USER'S MANUAL

FLYWHEEL PULLER PRO



HS3319P

Dear customer. Thank you for purchasing equipment from KH Trading, s.r.o.
 Our company is ready to offer you our services - before, during and after you buy our product.
 If you have any question, comment or idea, please contact our business centre. We will do our best to address your comment or question in timely matter.

Before first use, please read this manual carefully. It is your responsibility to study all instructions, necessary for safe use and operation and to understand all risks that may be involved during the use of power machines.

WARNING! Do not try to use this machine before reading this entire manual and before you know how to handle it. Keep this manual for future reference. Pay special attention to safety instructions. Not complying with safety rules may cause injury to the operating person or to people standing by or it may cause damage to the machine or to the work piece. Pay special attention to safety notes and safety labels on the machine. Never remove or damage them.

Please, write information such as the invoice number and the number of the sale receipt here in this box.

DESCRIPTION

Universal set for dismantling flywheels from common motors. The case contains a plate with variable slots for various spans of clamping slots and sets of fixation screws.

TECHNICAL SPECIFICATIONS

Puller plate	
Outer diameter127 mm
Inner diameter equipped with an axial pin bearing20 mm
Slot dimensions10 × 40 mm
Spindle	
Outer screw thread diameter (spec.)14 mm
Inner screw thread diameterM10
6HR for tightening10 mm
6HR for spindle case17 mm
Supplied screws with HR head	
3 pcsM6
3 pcsM8 × 1.25 mm
3 pcsM10 × 1.50 mm
3 pcs galvanized ironM10 × 1.00 mm

REPAIR AND MAINTENANCE REPORT

Report and maintenance report:

DATE	REPAIR AND MAINTENANCE REPORT	SERVICE SHOP

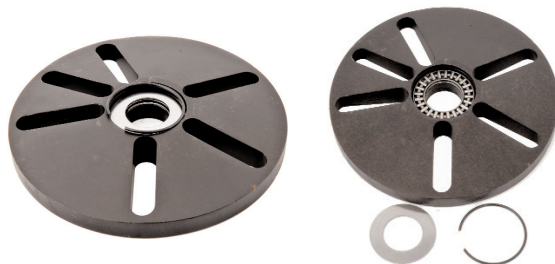
MAINTENANCE

- Keep your tool clean. Dirt from tools may enter the inner tool mechanism and cause damages to the tool.
- Do not use aggressive cleaning solution or paint thinners to clean your tool.
- Clean plastic parts with cloth dipped in soapy water.
- Clean and lubricate metal surfaces with a cloth dipped in paraffin oil.
- If you are not using your tool, conserve it with grease and store it in dry place to prevent corrosion.

Detailed description of the use of this tool is not included in this manual, because the manufacturer / distributor assumes that the user is experienced in similar type of work. Also according to the applicable law, this tool is considered as a commonly sold and used tool. If the user is unfamiliar with the use of this tool, we recommend finding out more information about using this tool at the Department of work safety.

Lubrication

The spindle bearing and screw threads need to be lubricated on a regular basis. Lubricate the bearings after dismantling the wire ring and supporting disc.



DISPOSAL

When the operational life of your device is over, dispose off it in accordance with valid rules and regulations. Your product is made of metal and plastic parts that may be recycled when separated.

1. Disassemble all parts.
2. Separate all parts according to the material they are made of (e.g. metals, rubber, plastics, etc.). Take the separated parts to the recycling facility near you for further processing.

Information about the location of recycling centres may be found at your local City office or throughout an Internet search.

CAUTION

If the machine breaks down, send it back to the vendor for quick repair. Please, enclose brief description of the defect. That makes repair easier. If the machine is still covered by warranty, enclose the warranty card and proof of purchase receipt. After the warranty period expires, we repair your machine for a special price.

To prevent possible damages during shipping, packed the machine carefully or use the original packaging material. We are not liable for shipping damages due to incorrect packaging of your machine. If making a claim at the shipping company the level and method of packaging plays a major role during claim evaluation process.

Note: Pictures and contents in this manual may slightly differ from the actual product or accessories. It is due to continuous improvement of our products. Such small differences have no effect on the product functionality.

Supplied reduction screws with notches - cylindrical

3 pcsM10/M12 × 1.50 mm
3 pcsM10/M16 × 2.00 mm
1 pcsM10/M16 × 1.25 mm
1 pcsM10/M20 × 1.50 mm

Supplied screws with HR head - with recessed shaft diameters

3 pcsM7 × 1.00 mm
Length81 mm

Washers

3 pcs6 mm
3 pcs10 mm

Stud







Diameter12.8 mm
Length47 mm
Weight2.75 kg

The accuracy of instructions, graphs and information contained herein, depends on the printing date. Due to continuous product improvement, the manufacturer reserves the right to change technical parameters of the product, without prior customer notification.

SAFETY PRECAUTIONS

- **This tool may be used by a qualified person, 18 years or older who has been trained in work and environmental safety procedures.**
- **Any person using this equipment must possess a medical certificate demonstrating his eligibility to operate this equipment.**

Symbols used in this manual

-  **Warning!**
This symbol informs you about the risk of personal injury or damage to the machine or materials.
-  **Warning!**
Danger of damage.
-  **Note:**
Additional information.
-  **Use personal safety protection gear.**
-  **Do not use open fire.**
-  **Do not smoke during work.**

General instructions

- Plastic bags and packaging materials pose danger to small children or animals.
- Make sure you know your tool and you are familiar with its operating procedure. Know the hazards if not used correctly.
- Make sure the user of the tool has been thoroughly introduced with the handling, operation, elements of this tool and with the possible dangers, resulting from its use.
- Maintain your working area clean. Disorganized working area may cause accidents.
- Never work in tight spaces or in purely lit rooms. Make sure the floor is solid and stable and that you can move around easily. Always keep stable posture.
- Stay focused and use all your senses. Pay attention to the working procedure. Do not continue to work if you cannot pay full attention.
- Maintain your tools clean.
- Handles must be kept free of grease and dirt.
- Make sure no children, unauthorized persons or animals have access to your workshop.
- Use only for purposes for which it has been designed.
- Use personal work protection while working (for ex. protective glasses, earplugs, respirator, protective footwear, etc.).
- Do not underestimate your abilities and know your limits. Use both hands.
- Never work under the influence of alcohol or other drugs.
- Do not use the tool if you feel dizzy or weak.
- Any modifications or improvements to the tool are strictly prohibited. If you discover any cracks or damages to the tool, DO NOT USE.
- If you see any unusual sign or hear any strange sound, stop working immediately.
- Do not forget to remove all wrenches and screwdrivers from the tool after use.
- Before use, make sure all screws are tightened securely.
- Perform maintenance regularly. Before use, make sure the tool is in good working conditions and without any damage.
- Use only original spare parts for repairs.
- Using non-original spare parts or other parts not approved by the manufacturer may cause injury to the operating personnel.
- Use this tool only for work that it is capable of handling. Do not overload your tool or accessories. Do not attempt to use the tool with insufficient power to perform heavy duty work.
- Do not overload your tool. Measure the work load in such way, so it could be done with comfortable speed. Damages due to tool overload are not covered by warranty.
- Do not expose to extremely high temperature or direct sunlight.
- This tool is not designed for use in humid environments or under water.
- If you are not using your tool, store it in a dry and safe place, out of reach of children. Make sure all moving parts are in good working condition.
- Before use make sure that no part is cracked or stuck, Make sure all parts are attached and assembled as designed. Beware of all other conditions that may have a negative effect on the proper functioning of your tool.
- If not stated otherwise in this manual, all damaged parts and safety elements must be repaired or changed.

Fine mechanics

- Never use vise to hold your tool/machine.
- Protect you device from impact and fall. After you finish working place your device/tool back inside the protective briefcase.

Assembly

- Do not use the tool unless completely assembled.

Vehicle service centre accessories and equipment

- Before performing any repair, secure the vehicle against movement.

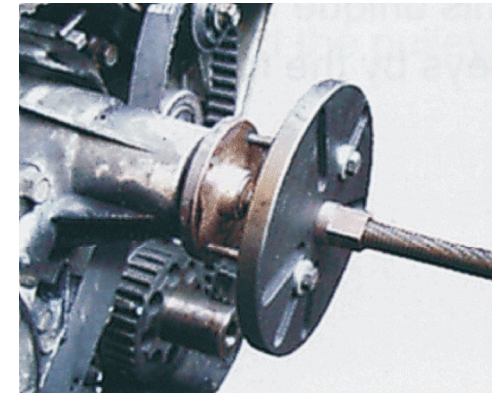
ASSEMBLY

- Before throwing the packaging material out, make sure no part is left inside. If so, take it out and install it. Use the part listing for check-up and the installation drawing for guidance.

OPERATION

Use

- Insert the spindle into the central slot of the plate so that it is leaning against the axial bearing.
- Insert the supplied spindle adapter into the central flywheel slot of the motor.
- With the help of the supplied connective material, affix the plate to the flywheel so the flat surface of the plate is facing away from the motor.
- By turning the spindle with the 6HR 10 mm you get to the bearing surface of the spindle adapter.
- For manual tightening of the flywheel hold it with a 10 mm 6HR10 mm key and with a 17 mm key turn the 6HR17 mm - until the flywheel is removed. Clamping with 6HR10 mm prevents damage to the bearing surface upon screwing.



CAUTION

Before completely removing the flywheel from the motor crank shaft, secure it against fall - it may cause damage to the part.

Danger of injury upon fall - the part is heavy.