

WARRANTY CARD

1. Products are covered by a 24-month warranty from the date of sale pursuant to the Civil Code, or by a 12-month warranty pursuant to the Commercial Code, with respect to proven defects in material or manufacturing faults. All other claims in relation to damages of whatever type, direct or indirect, against persons or material are excluded.
2. The warranty does not cover defects caused by unprofessional installation or handling, unprofessional operation, overloading, non-adherence to the included user's manual, use of incorrect accessories or inappropriate work tools, repairs or alterations performed by unqualified persons or damage during transport or mechanical damage. Certain types of products or their components, for example, accessories, motors, carbon brushes, sealing and hot air elements, which require periodical replacement can be expected to be subjected to standard wear and tear during use, which is not covered by the warranty.
3. When exercising a warranty repair claim, it is necessary to prove that the product was sold by the vendor with whom the warranty claim is lodged and that the warranty period has not yet expired. For this purpose, we recommend, in the interest of the fastest possible settlement of the warranty claim, to present the warranty card with the stamp of the manufacture date and sale date, the serial number, stamp of the respective sales location and the signature of the salesperson, or a valid proof of purchase, etc.
4. Exercise the warranty claim with the vendor from whom you purchased the product, or send it in non-disassembled condition for repair.
5. The warranty period is extended by the period for which the product has been in a warranty repair. Send the product for which you lodged a warranty claim together with a description of the fault, carefully wrapped (ideally in the original box, which we recommend retaining for this purpose) together with a filled out warranty card or another relevant document proving the right to exercise a warranty claim.
6. Only hand products over for repair in cleaned condition. Otherwise, for hygiene reasons it will not be possible to accept them or a cleaning fee must be charged.

unitechnic.cz s.r.o.
Warranty and Service Department
Areál bývalého cukrovaru
Hlavní 29 (hala č.3 uni-max)
277 45 Úžice

Warranty Dept. tel.:	266 190 156	T-Mobile	603 414 975
	266 190 111	O ₂	601 218 255
Fax	266 190 100	Vodafone	608 227 255

<http://www.uni-max.cz>

E-Mail: reklamace1@khnet.cz
obchod@khnet.cz

Product:	WET STONE POLISHER 4 200		
Model:	SM642WM14	Serial number:	
Manufacture date:	Repair shop comment:		
Date of sale, stamp, signature:			

www.uni-max.com

USER'S MANUAL TRANSLATION OF THE ORIGINAL USER'S MANUAL

WET STONE POLISHER 4 200



SM642WM14

MAINTENANCE

- Always keep tools clean. Foreign material entering the tool mechanism may cause damage to the tool.
- Do not use any aggressive cleaning agents and solvents for cleaning.
- We recommend wiping plastic parts with a rag dipped in soapy water.
- Wipe metal surfaces with a rag dipped in kerosene.
- Store the unused equipment in preserved state in a dry place where it will not corrode.

Maintenance instructions:

- To ensure the safe operation of this tool, perform regular maintenance.
- Set maintenance intervals, for example after a prescribed time interval, after a certain number of work cycles or set a number of maintenance intervals to be performed per year.
- When handling waste, adhere to valid regulations.

DISPOSAL

It is necessary to dispose of the product at the end of its service life in accordance with the applicable legislation. The product is made of metal and plastic parts that are recycled after separation.

1. Disassemble all parts of the machine.
2. Separate all parts according to the material (metals, rubber, plastics, etc.).
Transfer the sorted material for further use.

- Information on collection points is available at your local city office or on the Internet.

ATTENTION

In the event of a malfunction, send the equipment to the vendor's address so that the repair can be carried out as soon as possible. A brief description of the fault will shorten troubleshooting and repair time. Include the warranty card and proof of purchase with the equipment within the warranty period. We will repair your equipment for an exclusive price after the warranty period expires.

To prevent damage to the equipment during transport, pack it securely and use the original packaging. We are not liable for any damage during transit and any claims with the shipping service depends on the level of packaging and protection against damage.

Note: The illustrations may differ from the product delivered and the extent and type of accessories supplied can also vary. This is a result of development, and such differences have no impact on the product's correct functionality.

SAFETY PRECAUTIONS

- The equipment may only be operated by persons over 18 years of age, duly qualified, informed about and trained in the principles of safety and occupational health and safety.

We recommend equipping the workplace with safety regulation charts:

- “Prevent most frequent injuries” – SANDERS/POLISHERS

Used symbols:



Attention!

Indicates a risk of injury or significant material damage.



Risk of entanglement!

Beware of injury caused by the entanglement of clothing or body parts by rotating parts.



Warning!

Risk of damage



Note:

Additional information

The denotation of stickers with safety symbols:



Personal protective aids must be used



Use of an open flame is forbidden



Smoking forbidden when using the equipment

Place the stickers on the surface of equipment so that they are visible to the operator at all times before and during the operation.

! Generally

- Using plastic bags for packaging can be hazardous to children and animals.
- Familiarize yourself with the equipment, its controls, operation, elements of this equipment and possible risks associated with its incorrect use.
- Ensure that the user of the equipment has been thoroughly familiarised with the controls, operation, elements of this equipment and possible hazards resulting from its use.
- Always ensure safety instructions are listed on the labels. Do not remove or damage these labels.
- Contact the supplier in the event of damaged or illegible labels.
- Keep the workplace clean and in order. Disorder in the workplace may lead to an accident.
- Never work in cramped or poorly lit areas. Always make sure that the floor is stable and there is good access for work. Always maintain a stable posture.
- Continuously observe the workflow and use all your senses. Do not continue working if you cannot fully concentrate on it.
- Take care of your tools and keep them clean.
- Handles and switches must be kept dry and free from oil and grease.
- Prevent access to animals, children and unauthorized persons.
- Never leave the equipment unattended whilst it is in operation.
- Do not use the equipment for any purpose other than for which it is intended.
- Use personal protective equipment during work (e.g. goggles, earmuffs, respirator, safety footwear, etc.).
- Do not overexert yourself, always use both hands.
- Never operate the equipment under the influence of alcohol and drugs.
- Do not operate the equipment if you suffer from dizziness, weakness or fainting.

- No modifications to the equipment are permitted. DO NOT USE it if you discover bent parts, cracks or other damage.
- Never carry out maintenance on the equipment while it is running.
- If unusual sounds or other unusual phenomenon occur, immediately stop the equipment and stop working.
- Make sure that all screws are tightened before use.
- Ensure proper maintenance of the equipment. Check the equipment for damage before using it.
- Only use original spare parts for maintenance and repair.
- The use of additional equipment or accessories not approved by the manufacturer may lead to injuries.
- Select suitable devices for specific work. Do not attempt to overload low-power devices or accessories with work that requires larger mechanical equipment.
- Do not overload the equipment. Organise workflow to enable effortless work at optimal speed. Any damage caused by straining (overloading) is not covered by the warranty.
- The equipment is not designed to work under water or in a wet environment.
- When not using the equipment, store it in a dry, safe place away from children.
- Before use, check that all safety elements are working seamlessly and efficiently. Make sure that all moving parts are in good condition.
- Check whether any parts are broken or stuck, make sure that all components are properly mounted. Keep check of all other conditions, which may affect operation of the equipment.
- Unless otherwise stated in this manual, any damaged parts must be repaired or replaced.

! Configurations

- Do not use the equipment if it has not been completely assembled according to instructions contained in the manual.

! Compressed air

- Dry compressed air must have the specified pressure upon entry into the equipment and must be supplied in sufficient amount. Higher pressure reduces lifetime due to faster wear and tear, and increases the risk of injury.
- The connection through which compressed air flows into the equipment must have the prescribed dimensions.
- Special attention must be paid to water, the presence of which causes damage to the tool. Therefore, do not forget to drain condensed water out of the compressor's pressure tank every day and always also dry out the hose delivering the air to the tool.
- The equipment must be protected against the entry of foreign materials. Therefore, it is necessary to pay special attention to the cleanliness of the inlets and outlets.
- Before disconnecting any connections, always ensure the operating pressure is released down to atmospheric pressure.
- Prior to starting work, check the leak-tightness of all connections, and immediately remove any possible leaks. Leaks overload the compressor and result in a significant increase in operating costs.
- Regularly check the condition of pressure hoses. In case of their mechanical damage or upon finding a leak, immediately stop work and see to their qualified replacement. Pressure hoses may not be subjected to stress by twisting - follow the line on the surface of the hose, which must not be twisted.
- Pressure hoses may not be led through places where there is the threat of mechanical damage against sharp edges or pinching.
- Blow compressed air through any new hoses.
- When passing through any structures, it is necessary to use grommets and to regularly check their condition.
- Use protective covers and end caps to prevent the entry of foreign material into the equipment.

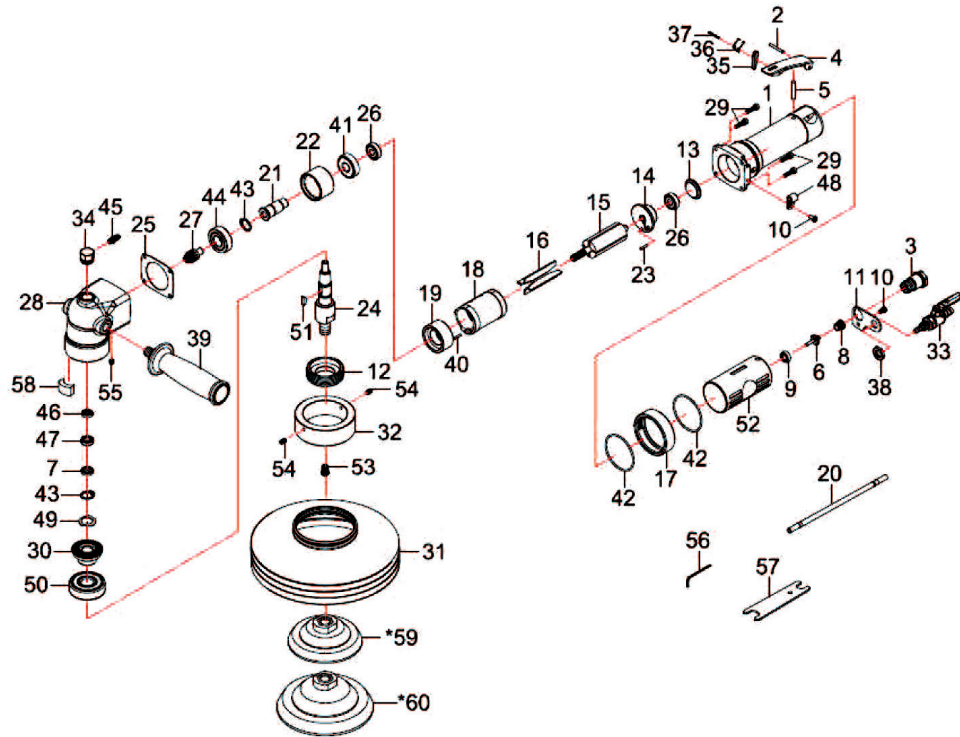
! Manual tools

- Do not put the tool aside until it comes to a complete stop.
- When putting a tool aside, make sure that it is not leaning against an implement.
- Never clamp the tool into a vice.
- Have the work piece firmly secured and be extremely careful when handling it or when releasing it.

Pos.	Part number	Name	Pos.	Part number	Name
1.	642W01	Motor cover	33.	6N-6664W36-11S	Water shut-off valve
2.	30102	Spring pin (3×25)	34.	642W34	Screw
3.	5D-619203	Air inlet	35.	522239	Fuse
4.	6K-301104	Choke flap lever	36.	522212	Spring
5.	500105	Vent	37.	51542	Spring pin
6.	75-725146	Valve stem	38.	6N-6664W38	Nut
7.	642W07	Spacer ring	39.	5D-619256	Side handle
8.	73108	Spring	40.	51542	Flexible pin
9.	75-725145	Rubber spacer ring	41.	080227	Bearing (6201ZZ)
10.	642W33	Screw (2) (M4×8)	42.	OR03805200	O-ring (2) (38.5×2)
11.	642W07	Solid plate	43.	STW-15	Retainer ring (STW-15)
12.	642W12	Nut	44.	06202LLU	Bearing (6202LLU)
13.	500121	Lid	45.	6N-6664W34	Supply hose
14.	642W14	Rear end plate	46.	6N-6664W12	Gasket seal
15.	618W15	Rotor	47.	0688ZZ	Bearing (L-688Z)
16.	61916	Rotor blade (4)	48.	6N6664W17	Stop
17.	642W17	Damper	49.	WW15.5	Fan washer
18.	5D-619218	Roller	50.	06303LLU	Bearing (6303LLU)
19.	642W19	Front end plate	51.	61934	Key
20.	642W20	PU pipe	52.	5D-619252	Handle
21.	642W21	Clamping shaft	53.	6N-6664W11	Water outlet
22.	642W22	Spacer ring	54.	82246	Set screw (2) (M5×8)
23.	206106	Pin (2.5×12)	55.	40340	Set screw (M5×5)
24.	642W24	Spindle	56.	10010	Hex key (2.5 mm)
25.	642W25	Gasket seal	57.	51228	Key
26.	030120	Bearing (2) (608ZZ)	58.	642W37	Felt ring
27.	618W27	Bevel wheel	*59.	642W40	Tang 4"
28.	642W28	Head	*60.	642W50	Tang 5"
31.	642W31	Guard			
32.	642W32	Protective ring			

*Optional part

DETAILED DRAWING AND LIST OF PARTS



! Rotating tools

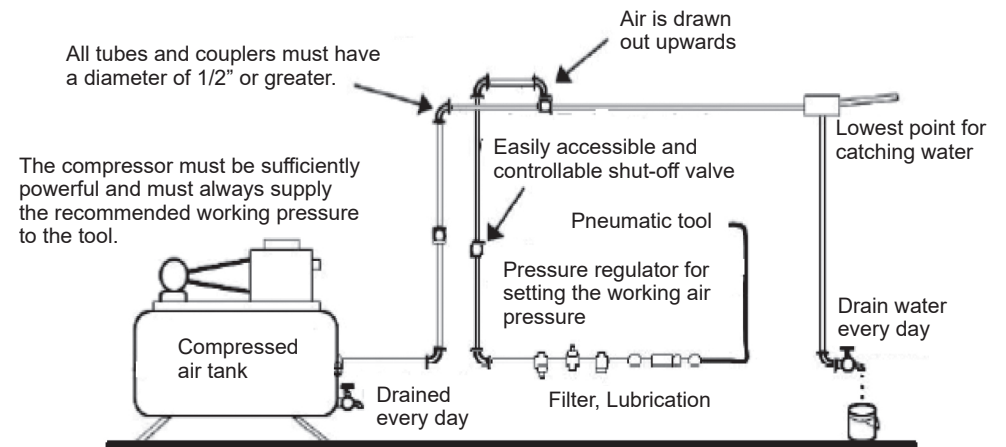
- Always wear appropriate clothing (e.g. do not wear loose clothing, ties or jewellery, tie long hair at the back of your head, protect your legs and do not use old footwear. Keep shirt sleeves buttoned up or roll them up).
- Risk of entanglement and winding on to rotating parts.
- Do not remove protective covers and ensure that maximum protection of the operator is always ensured.
- While working, avoid contact with moving parts. Keep hands away from rotating parts.

OPERATING MEASURES

- Before throwing away the equipment packaging, ensure that no parts remain inside it. If so, find the part in the parts list or on the assembly diagram and install the relevant part.
- The tool is driven by compressed air at a pressure of 0.63 MPa (6.3 bar).
- The air must be free of moisture and must be lubricated using oil mist in the system (see below), or by an independent lubricator connected to the tool (from our product range, e.g. PN 41354).
- Alternatively, it is possible to lubricate using 4 – 5 drops in the inlet thread every 1 – 2 hours of operation.
- Use only oil intended for lubricating pneumatic tools (e.g. PN 40060).

Compressed air supply

Use only clean and lubricated compressed air where its pressure is guaranteed not to exceed 90 psi / 6.3 bar, when the tool is running with the trigger pulled in completely and the air pressure regulator is open to the maximum position. Use hoses intended for compressed air with the recommended diameter and length. We recommend that you connect the tool to the source of the compressed air according to diagram in fig. 1.



RECOMMENDED SYSTEM FOR CORRECT SUPPLY OF COMPRESSED AIR

OPERATION

Application:

Water-cooled stone polisher.

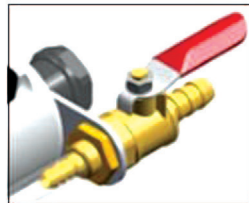
Always use safety glasses, a suitable respirator and protective gloves to limit the risk of injury that would be caused by particles flying off the grinding disc or the material being worked on.

Preparation before using the wet stone polisher:

1. Do not modify the operating speed of the wet stone polisher.
2. The maximum permitted speed shown on the tool must not be exceeded.
3. The idle speed of this tool must always be checked when maintenance or repairs are carried out on it. This check must be performed when a grinding disc is removed.
4. Use a pressure regulator to prevent an excessive pressure increase, which could result in an excessively high speed and damage to the tool.



1. Grinding plate cover.
2. Body
3. Trigger
4. Trigger safety
5. Water shut-off valve
6. Water supply connection
7. Side handle



Detail of the water shut-off valve (5)

Possible defects and their troubleshooting:

Symptom	Side effect	Possible cause	Solution
The tool does not work	Air is leaking from the air supply	Worn out or broken blades	Replace the blades
		Damaged ball bearing	Replace the ball bearing
		Rusted or blocked motor	Perform disassembly and repair
	No air is coming out of the air supply	The regulator is not opened	Set the regulator
		No flowing air	Check the air supply system and couplers
		Damaged or destroyed valve	Perform disassembly and repair
Low performance	Low speed	Insufficient air pressure	Check the air pressure
		Incorrectly set regulator valve	Set the regulator valve
Low performance	Motor is running abnormally or is very noisy	Insufficient lubrication, damaged front or rear plate, ball bearing, cylinder, rotor, blades, etc.	Perform lubrication or replacement of parts
Motor runs continuously	The trigger is not returning to its initial position or it is not returning to this position correctly.	The trigger is limited by other items or its spring was damaged, deformed or has rusted.	Perform disassembly and repair
	The trigger functions normally	The trigger is worn out or the valve seat was damaged or destroyed.	Perform disassembly, repair and replacement of the part.